

2018 KS2 School Dashboard for governors & school leaders

Produce custom dashboards at www.fftaspire.org

Seamer and Irton Community Primary School

LA North Yorkshire DFE 8152223 Produced September 2018 Version 1

What it is

Seven easy-to-use reports which help governors and school leaders to evaluate school performance using the latest 2017 DfE school performance indicators.

What it tells you

- What are the strengths and areas for improvement in your school?
- How does attainment and pupil progress compare to the national average?
- How are you performing in different subjects?
- Do you have any under-performing groups of pupils?
- How might the context of your school affect performance?
- How does pupil attendance compare to the national average?

About the data shown

1 2 3

Actual results

Actual results for your school, using a range of measures such as averages and thresholds.



Gauges

These display headline indicators and whether actual results and pupils' progress are in line with, or significantly above or below, the national average.

ESTIMATED



1 2 3

Pupil progress

The value added progress that your pupils have made from one key stage to the next. FFT compares your actual results to the estimated results based on the progress of similar pupils nationally.



Statistical significance

Green plus signs and red minus signs highlight where either actual results or pupils' progress is significantly above or below the national average.



Trends

The dashboard analyses school performance over 3-5 years. Any significant year-on-year improvement is highlighted using an up arrow. Significant declines in performance are highlighted with a down arrow.



Strengths & weaknesses

These highlight key pupil groups and subjects where progress is above or below the national average.

Working in partnership with



Data sources

Generated from FFT Aspire which includes data sourced from the DfE (National Pupil Database) and data calculated by FFT. FFT is accredited as a DfE supplier to receive early access to ASP data. Headline performance indicators will be consistent with the DfE School Performance Tables and ASP.

Overview

KS2 Attainment 2018 · Actual results

55 pupils

KS2 Progress 2018 · Value Added

54 matched pupils

Average Scaled Score (Re, Ma)

% Expected standard+ (Re, Wr, Ma)

Average Scaled Score (Re, Ma)

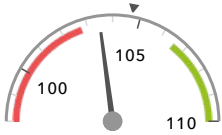
% Expected standard+ (Re, Wr, Ma)

103.5

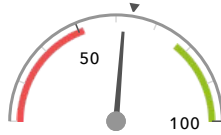
62%

-1.9

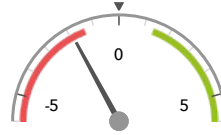
-11%



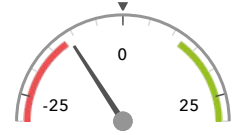
In line with the national average (104.7) ◀



In line with the national average (64%) ◀



Significantly below the national average (0) ◀



In line with the national average (0%) ◀

KS2 higher and lower performing pupil groups 2018

	Higher performing	Lower performing
Overall achievement pupil progress		Higher attainers (20) ⬇️ Autumn Term (19) ⬇️ Lower attainers (8)
KS2 reading achievement pupil progress		Lower attainers (8) Autumn Term (19) ⬇️ Higher attainers (20) ⬇️
KS2 writing achievement pupil progress	FSM (ever) (5) FSM (in last 6 years) (5) Female (28) ⬆️ ⬆️	Lower attainers (8) Male (26)
KS2 mathematics achievement pupil progress	Middle attainers (26)	Higher attainers (20) Lower attainers (8) Female (28)
KS2 grammar, punctuation & spelling achievement pupil progress		Higher attainers (20) ⬇️ ⬇️ Autumn Term (19) ⬇️ ⬇️ Male (26) ⬇️

Seamer and Irton Community Primary School

2018 KS2 VA

Attainment & progress

KS2 Attainment 2018

55 pupils

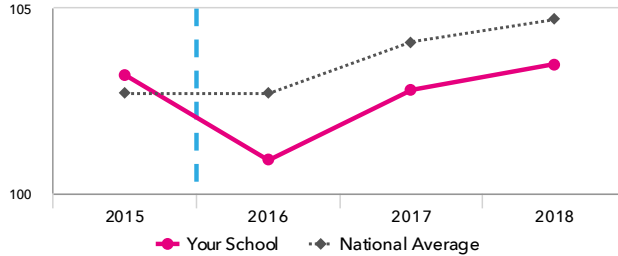
Average Scaled Score (Re, Ma)

103.5

FFT Rank



In line with the national average (104.7)



KS2 Progress 2018

54 matched pupils

Average Scaled Score (Re, Ma)

-1.9

FFT Rank



Significantly below the national average (0)

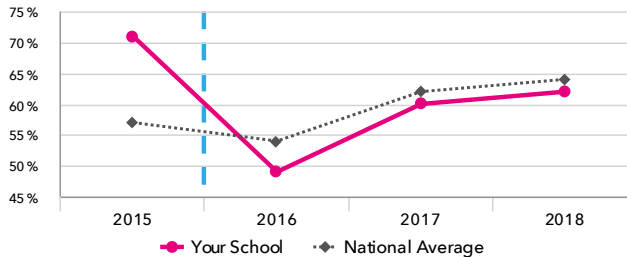
% Expected standard+ (Re, Wr, Ma)

62%

FFT Rank



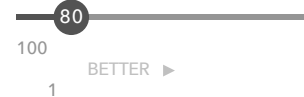
In line with the national average (64%)



% Expected standard+ (Re, Wr, Ma)

-11%

FFT Rank



In line with the national average (0%)

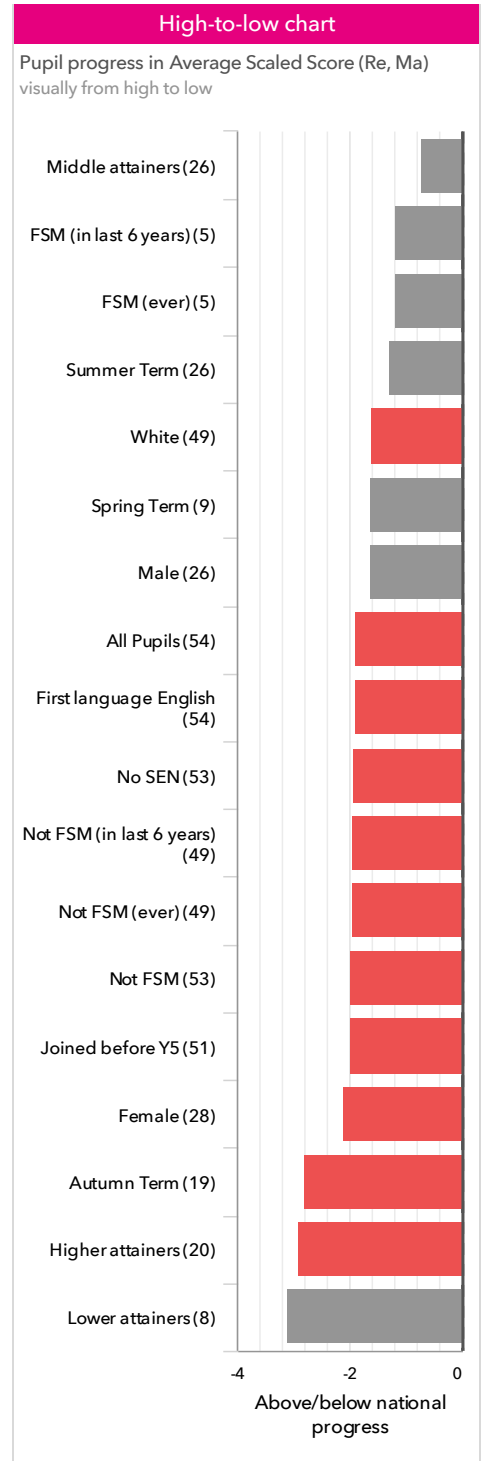
KS2 performance summary

	Actual results			Pupil progress		
	2016	2017	2018	2016	2017	2018
Number of Pupils / % Matched	57	60	55	100%	98%	98%
% Expected standard+ (Re, Wr, Ma)	49% ↓	60%	62%	-6% ↓	-5%	-11%
% Higher standard (Re, Wr, Ma)	2%	3%	11%	-1%	-4%	-2%
Average Scaled Score (Re, GPS, Ma)	101.3 ⚡	103.2	103.7	-1.3 ⚡↓	-1.3 ⚡	-2.0 ⚡
Average Scaled Score (Re, Ma)	100.9 ⚡↓	102.8	103.5	-1.4 ⚡↓	-1.3	-1.9 ⚡
% Expected standard+ Reading	67%	67%	69%	-3%	-10%	-14% ⚡
% Higher standard Reading	9%	17%	22%	-7%	-8%	-10%
Scaled Score Reading	101.0	102.7	103.5	-1.3 ↓	-1.5	-2.6 ⚡
% Expected standard+ Writing	72% ↓	75%	84%	-7%	-7%	-3%
% Higher standard Writing	16% ↓	12%	33% ⬆️⬆️	+5%	-5%	+11%
Scaled Score Writing	101.2	100.6	104.3 ⬆️⬆️	+0.2	-1.3	+0.8 ⬆️
% Expected standard+ Maths	68%	75%	78%	-2%	-3%	-4%
% Higher standard Maths	5% ⚡	13%	16%	-7%	-7%	-12%
Scaled Score Maths	101.0 ⚡↓	102.9	103.9	-1.5 ⚡↓	-1.1	-1.1
% Expected standard+ Grammar, Punctuation & Spelling	72%	82%	67%	-6%	-2%	-18% ⚡↓
% Higher standard Grammar, Punctuation & Spelling	14%	13% ⚡	25%	-4%	-18% ⚡	-13%
Scaled Score Grammar, Punctuation & Spelling	102.5	104.3	104.0	-1.0 ↓	-1.7 ⚡	-3.0 ⚡
% Expected standard+ Science	84%	83%	85%	-	-	-
Average Point Score (Re, Wr, Ma)	-	-	-	-	-	-
% Level 4+ (Re, Wr, Ma)	-	-	-	-	-	-
% Level 4B+ (Re, Wr, Ma)	-	-	-	-	-	-
% Level 5+ (Re, Wr, Ma)	-	-	-	-	-	-

Pupil groups

KS2 Pupil groups performance 2018

			Actual results			Pupil progress		
	Pupils	Average Scaled Score (Re, Ma)	% Expected standard + (Re, Wr, Ma)	% Higher standard (Re, Wr, Ma)	Average Scaled Score (Re, Ma)	% Expected standard + (Re, Wr, Ma)	% Higher standard (Re, Wr, Ma)	
Summary	All Pupils >	55	103.5	62%	11%	-1.9	-11%	-2%
Gender	Male >	27	103.1	56%	7%	-1.6	-17%	+2%
	Female >	28	103.9	68%	14%	-2.1	-5%	-5%
Prior Attainment	Higher attainers >	20	107.3	80%	25%	-2.9	-15%	-6%
	Middle attainers >	26	103.8	69%	4%	-0.7	-2%	+1%
	Lower attainers >	8	95.6	0%	0%	-3.1	-29%	-0%
Pupil Premium	FSM (in last 6 years) >	5	103.2	60%	0%	-1.2	-9%	-6%
	Not FSM (in last 6 years) >	50	103.5	62%	12%	-1.9	-11%	-1%
FSM	FSM >	1	107.0	100%	0%	+2.3	+20%	-3%
	Not FSM >	54	103.4	61%	11%	-2.0	-11%	-2%
FSM Ever	FSM (ever) >	5	103.2	60%	0%	-1.2	-9%	-6%
	Not FSM (ever) >	50	103.5	62%	12%	-1.9	-11%	-1%
Term of Birth	Autumn Term >	19	104.1	63%	16%	-2.8	-14%	+1%
	Spring Term >	10	101.1	40%	10%	-1.6	-23%	-3%
	Summer Term >	26	104.0	69%	8%	-1.3	-4%	-3%
SEN Group	SEN Support >	2	87.8	0%	0%	+0.9	-8%	-0%
	No SEN >	53	104.1	64%	11%	-1.9	-11%	-2%
EAL	First language English >	55	103.5	62%	11%	-1.9	-11%	-2%
Mobility	Joined in Y5 or Y6 >	3	106.2	67%	33%	-0.4	-14%	+28%
	Joined before Y5 >	52	103.4	62%	10%	-2.0	-11%	-3%
Ethnicity	White >	49	103.9	65%	10%	-1.6	-7%	-2%
	Black African >	2	98.3	50%	50%	+0.3	+1%	+40%
	Other Asian >	4	101.5	25%	0%	-5.8	-59%	-6%



Subjects

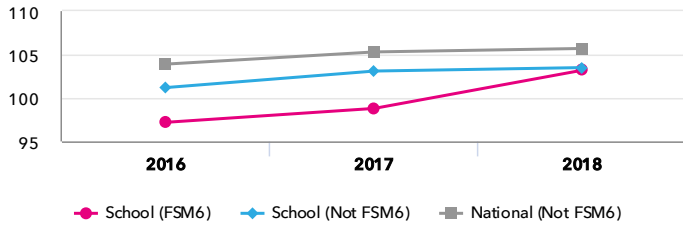
KS2 subject performance 2018

	Actual results			Pupil progress			Actual results over time														
	2016	2017	2018	2016	2017	2018															
Number of Pupils / % Matched	57	60	55	100%	98%	98%															
Reading																					
% Expected standard+	67%	67%	69%	-3%	-10%	-14% ⬇	<table border="1"> <caption>% Expected standard+ Reading</caption> <thead> <tr><th>Year</th><th>Your School</th><th>National Average</th></tr> </thead> <tbody> <tr><td>2016</td><td>67%</td><td>66%</td></tr> <tr><td>2017</td><td>67%</td><td>72%</td></tr> <tr><td>2018</td><td>69%</td><td>75%</td></tr> </tbody> </table>			Year	Your School	National Average	2016	67%	66%	2017	67%	72%	2018	69%	75%
Year	Your School	National Average																			
2016	67%	66%																			
2017	67%	72%																			
2018	69%	75%																			
% Higher standard	9%	17%	22%	-7%	-8%	-10%															
Scaled Score	101	103	104	-1.3 ⬇	-1.5	-2.6 ⬇															
Level 4+	-	-	-	-	-	-															
Level 4B+	-	-	-	-	-	-															
Level 5+	-	-	-	-	-	-															
Average Point Score	-	-	-	-	-	-															
Writing																					
% Expected standard+	72% ⬇	75%	84%	-7%	-7%	-3%	<table border="1"> <caption>% Expected standard+ Writing</caption> <thead> <tr><th>Year</th><th>Your School</th><th>National Average</th></tr> </thead> <tbody> <tr><td>2016</td><td>72%</td><td>75%</td></tr> <tr><td>2017</td><td>75%</td><td>77%</td></tr> <tr><td>2018</td><td>84%</td><td>78%</td></tr> </tbody> </table>			Year	Your School	National Average	2016	72%	75%	2017	75%	77%	2018	84%	78%
Year	Your School	National Average																			
2016	72%	75%																			
2017	75%	77%																			
2018	84%	78%																			
% Higher standard	16% ⬇	12%	33% ⬆ ⬆	+5%	-5%	+11%															
Scaled Score	101	101	104 ⬆ ⬆	+0.2	-1.3	+0.8 ⬆															
Level 4+	-	-	-	-	-	-															
Level 5+	-	-	-	-	-	-															
Average Point Score	-	-	-	-	-	-															
Maths																					
% Expected standard+	68%	75%	78%	-2%	-3%	-4%	<table border="1"> <caption>% Expected standard+ Maths</caption> <thead> <tr><th>Year</th><th>Your School</th><th>National Average</th></tr> </thead> <tbody> <tr><td>2016</td><td>68%</td><td>70%</td></tr> <tr><td>2017</td><td>75%</td><td>75%</td></tr> <tr><td>2018</td><td>78%</td><td>75%</td></tr> </tbody> </table>			Year	Your School	National Average	2016	68%	70%	2017	75%	75%	2018	78%	75%
Year	Your School	National Average																			
2016	68%	70%																			
2017	75%	75%																			
2018	78%	75%																			
% Higher standard	5% ⬇	13%	16%	-7%	-7%	-12%															
Scaled Score	101 ⬇ ⬇	103	104	-1.5 ⬇ ⬇	-1.1	-1.1															
Level 4+	-	-	-	-	-	-															
Level 4B+	-	-	-	-	-	-															
Level 5+	-	-	-	-	-	-															
Average Point Score	-	-	-	-	-	-															
Grammar, Punctuation & Spelling																					
% Expected standard+	72%	82%	67%	-6%	-2%	-18% ⬇ ⬇	<table border="1"> <caption>% Expected standard+ Grammar, Punctuation & Spelling</caption> <thead> <tr><th>Year</th><th>Your School</th><th>National Average</th></tr> </thead> <tbody> <tr><td>2016</td><td>72%</td><td>73%</td></tr> <tr><td>2017</td><td>82%</td><td>78%</td></tr> <tr><td>2018</td><td>67%</td><td>77%</td></tr> </tbody> </table>			Year	Your School	National Average	2016	72%	73%	2017	82%	78%	2018	67%	77%
Year	Your School	National Average																			
2016	72%	73%																			
2017	82%	78%																			
2018	67%	77%																			
% Higher standard	14%	13% ⬇	25%	-4%	-18% ⬇	-13%															
Scaled Score	102	104	104	-1.0 ⬇	-1.7 ⬇	-3.0 ⬇															
Level 4+	-	-	-	-	-	-															
Level 5+	-	-	-	-	-	-															
Average Point Score	-	-	-	-	-	-															
Science																					
% Expected standard+	84%	83%	85%	-	-	-	<table border="1"> <caption>% Expected standard+ Science</caption> <thead> <tr><th>Year</th><th>Your School</th><th>National Average</th></tr> </thead> <tbody> <tr><td>2016</td><td>84%</td><td>81%</td></tr> <tr><td>2017</td><td>83%</td><td>82%</td></tr> <tr><td>2018</td><td>85%</td><td>82%</td></tr> </tbody> </table>			Year	Your School	National Average	2016	84%	81%	2017	83%	82%	2018	85%	82%
Year	Your School	National Average																			
2016	84%	81%																			
2017	83%	82%																			
2018	85%	82%																			
Level 4+	-	-	-	-	-	-															
Level 5+	-	-	-	-	-	-															
Average Point Score	-	-	-	-	-	-															

Disadvantaged pupils

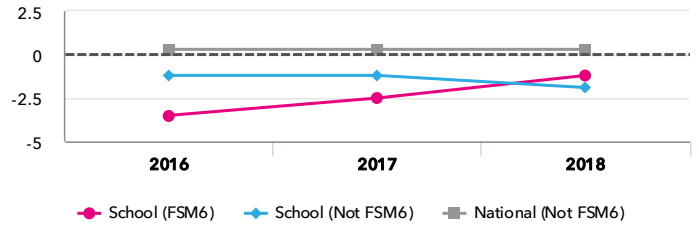
KS2 attainment for disadvantaged pupils 2018

Average Scaled Score (Re, Ma)



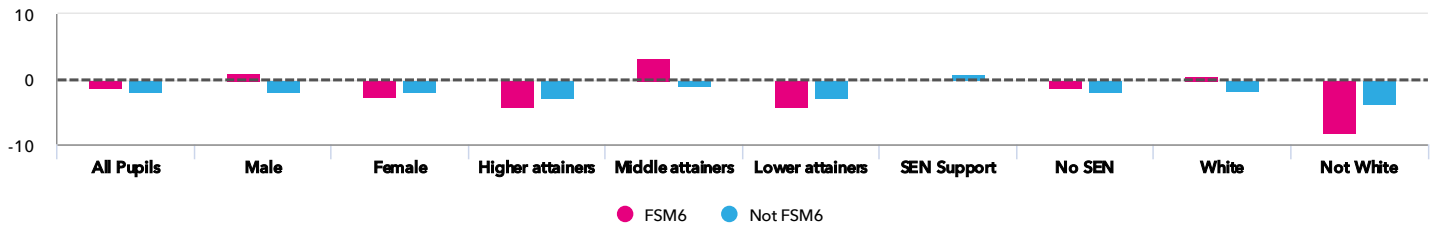
KS2 progress for disadvantaged pupils 2018

Average Scaled Score (Re, Ma)



Progress gap

Average Scaled Score (Re, Ma)



Attainment & progress

Pupils		Attainment			Progress				
		FSM6	Not FSM6	Gap	FSM6	Not FSM6	Gap		
Summary	All Pupils	5	50	103.2	103.5	-0.3	-1.2	-1.9	0.7
Gender	Male	2	25	108	102.7	5.3	1.1	-1.9	3
	Female	3	25	100	104.4	-4.4	-2.7	-2	-0.7
Prior Attainment	Higher attainers	2	18	103.8	107.6	-3.8	-4.2	-2.8	-1.4
	Middle attainers	2	24	107	103.5	3.5	3.4	-1.1	4.5
	Lower attainers	1	7	94.5	95.8	-1.3	-4.3	-2.9	-1.4
SEN Group	SEN Support	-	2	-	87.8	-	-	0.9	-
	No SEN	5	48	103.2	104.2	-1	-1.2	-2	0.8
Ethnic Group	White	4	45	104.4	103.8	0.6	0.6	-1.8	2.4
	Not White	1	5	98.5	100.8	-2.3	-8.2	-3.7	-4.5

Scatterplot

KS2 Pupil scatterplot 2018 55 pupils highlighted by Pupil Premium



Seamer and Irton Community Primary School

2018

KS2

Context

Context · Year 6 · 2017 / 2018

		Pupils	Proportion	
			School	National
Summary	All Pupils	55	100%	100%
Gender	Male	27	49%	51%
	Female	28	51%	49%
Prior Attainment	Higher attainers	20	36%	31%
	Middle attainers	26	47%	35%
	Lower attainers	8	15%	29%
Pupil Premium	FSM (in last 6 years)	5	9%	30%
	Not FSM (in last 6 years)	50	91%	69%
FSM	FSM	1	2%	15%
	Not FSM	54	98%	85%
FSM Ever	FSM (ever)	5	9%	31%
	Not FSM (ever)	50	91%	69%
Term of Birth	Autumn Term	19	35%	33%
	Spring Term	10	18%	32%
	Summer Term	26	47%	35%
SEN Group	SEN Support	2	4%	15%
	No SEN	53	96%	82%
EAL	First language English	55	100%	80%
Mobility	Joined in Y5 or Y6	3	5%	7%
	Joined before Y5	52	95%	93%
Ethnicity	White	49	89%	74%
	Black African	2	4%	6%
	Other Asian	4	7%	3%

Absence · Year 6 · 2017 / 2018

		Pupils	Absence		Persistent absentees	
			School	National	School	National
Summary	All Pupils	55	4%	4%	7%	5%
Gender	Male	27	3%	4%	0%	6%
	Female	28	4%	4%	14%	5%
Prior Attainment	Higher attainers	20	3%	3%	5%	2%
	Middle attainers	26	4%	4%	8%	4%
	Lower attainers	8	4%	5%	13%	10%
Pupil Premium	FSM (in last 6 years)	5	5%	5%	20%	12%
	Not FSM (in last 6 years)	50	4%	3%	6%	3%
FSM	FSM	1	5%	6%	0%	16%
	Not FSM	54	4%	4%	7%	4%
FSM Ever	FSM (ever)	5	5%	5%	20%	11%
	Not FSM (ever)	50	4%	3%	6%	3%
Term of Birth	Autumn Term	19	4%	4%	11%	6%
	Spring Term	10	4%	4%	10%	6%
	Summer Term	26	3%	4%	4%	5%
SEN Group	SEN Support	2	7%	5%	50%	10%
	No SEN	53	4%	4%	6%	4%
EAL	First language English	55	4%	4%	7%	6%
Mobility	Joined in Y5 or Y6	3	4%	6%	0%	15%
	Joined before Y5	52	4%	4%	8%	5%
Ethnicity	White	49	4%	4%	6%	6%
	Black African	2	2%	3%	0%	3%
	Other Asian	4	5%	4%	25%	4%